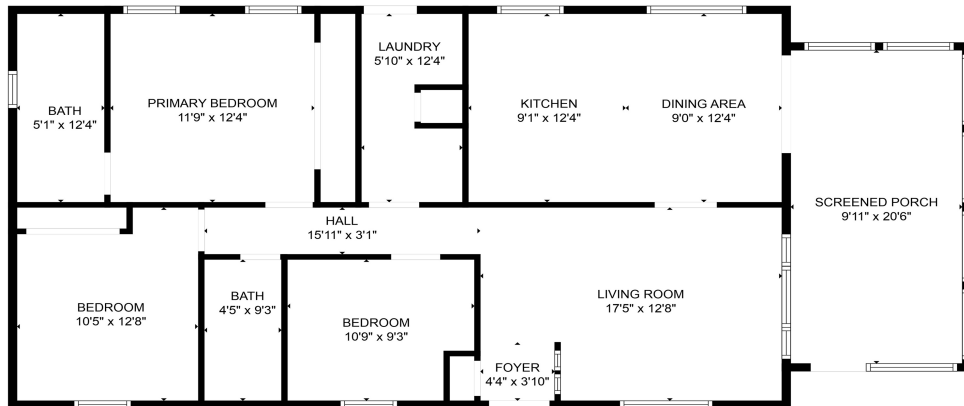


## Welcome to 16 Sheffield Drive

Partially-furnished and lovingly cared-for, this single-story home in Lewes is ready for your holiday happenings. Situated on a well-kept lot with over 1400 SQ. FT, you will love the huge sunroom facing the street; live a few miles from historic downtown Lewes and the beaches, and be close to the local scene with easy access to tax-free outlets, unique shops, restaurants, medical care and more. Entering the home thru the newly carpeted (2024) sunroom leads you to the open dining and kitchen areas. The sparkling kitchen with island features light wood cabinets with white, almond and blue touches, and new flooring (2021). The ample living room is a most comfortable entertaining space. The primary bedroom has new queen bed and the ensuite bath offers an easy walk-in shower with seating. Two additional guest rooms share a full bath. A spacious mud and laundry room with exit to the yard and completes this floor plan. Outside, there's off-street parking with room for two cars. Enjoy low maintenance ground accents, new skirting and front steps (2022), A/C and roof (2018). Riding lawnmower and tools convey, too.

Live your life and enjoy amenities including the Manor House Clubhouse, Manor Pool, a heated indoor salt-water swimming pool, dog park, bocce ball and horseshoe pit. You'll have access to the Georgetown-Lewes Bike Trail from our sister community Sussex West. Onsite management hosts monthly community events and are available to assist you when you need it. Come home and relax in the pool, play bocce ball and horseshoes with your family and friends. Show up for chair yoga, learn to line dance, play games in the afternoon, and bingo and poker at night. Don't miss this opportunity to live life and live it here in Sussex East. Buyers will need to apply for residency. The Land Lease is \$994.00/month.



16 Sheffield Drive, Lewes, DE 19958

Total Area: 1411 sq. ft.

FLOOR PLAN CREATED BY CUBICASA APP. MEASUREMENTS DEEMED HIGHLY RELIABLE BUT NOT GUARANTEED.

- Year: 1991
- SQ FT: 1411
- Skirting 2022
- Front Steps 2022
- Carpet-Porch 2024
- Flooring-Kitchen 2021
- A/C 2018
- Roof 2018
- Partially-furnished
- New Queen Bed in Primary
- Shed w/Tools and Riding Lawn Mower
- Yard & Shed
- Parking: Off-street, 2 Cars
- Cooling Type: Central A/C
- Heating: Forced Air, Metered Propane
- Hot Water: Electric
- Sewer/Water: Public